

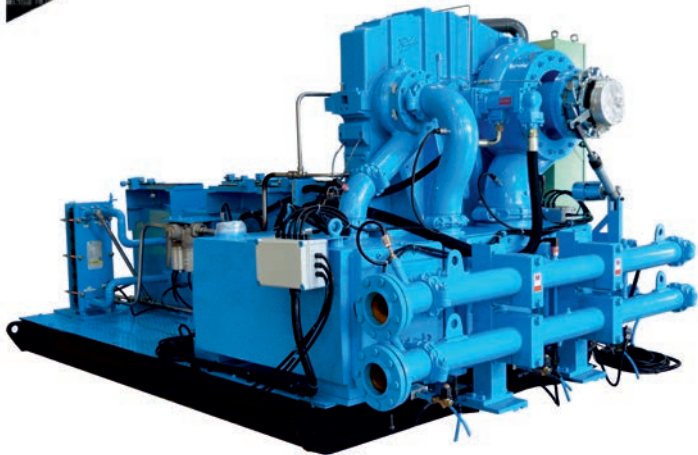
KIRLOSKAR PNEUMATIC CO. LTD.
A Kirloskar Group Company



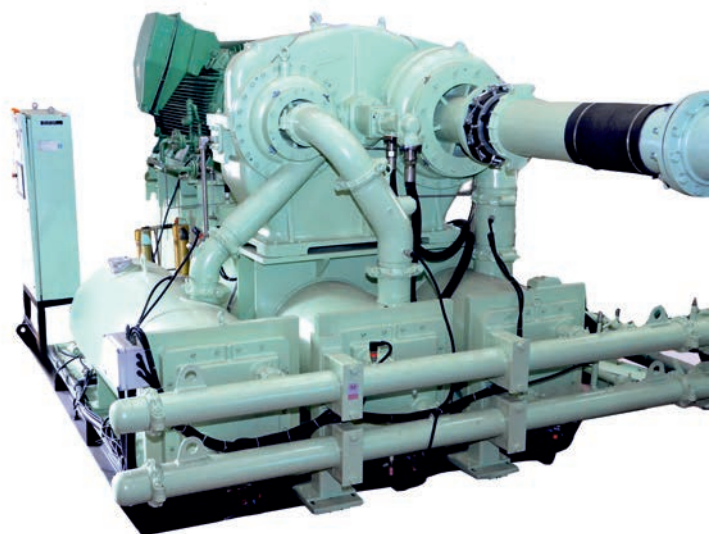
Enriching Lives



A-2100



A-3500



A-7000

Kirloskar Centrifugal Compressors
Exceeding Your Expectations

Kirloskar Pneumatic Company Limited is a well known and trustworthy brand in India. For over 5 decades, the Kirloskar Group has developed high value machinery for industries worldwide. Our Plant at Hadapsar, Pune is a state of the art facility with complete technology for compressor manufacturing.

Our Pune facility has the best of everything under one roof. Our talented and efficient team at Research & Development offers best solutions to our customers. Flexibility in manufacturing approach enables us to respond rapidly to changing market demands and to bring new technologies & products quickly and cost effectively.

Our own foundry facilitates our compressor's needs with our highly equipped Metrology lab & stress relieving furnaces ensuring best results. We are committed to provide energy efficient, reliable and cost effective solutions.

Driven by the Kirloskar Group philosophy of "Enriching Lives", KPCL believes in service to customers & society through partnership, guided by values, innovation, technology and consistency in business processes.

Kirloskar Pneumatic Company Limited Head Office, Pune India



High performance Aero Design

- Backward lean design of impeller for best-in-class efficiency
- Aerodynamically designed diffusers to convert Kinetic energy to Pressure rise.
- Optimized volutes for effective pressure recovery.

Simple Installation

- Pre Packages with after coolers, controls, drive motor and lubrication system
- Single water and electrical connection.
- Compact design, requires minimum floor space, energy packed machine.

**“KIRLOSKAR
CENTRIFUGAL
COMPRESSORS
OFFERS YOU
EVERYTHING”**

Trouble Free Operation

- AGMA Rated gears for minimum 20 years of service life.
- PLC Based “Unix” interactive touch screen Control System

Lowest Operation Cost

- True unloading Capability
- Excellent Part Load Efficiencies
- No wearing parts and virtually infinite life of bearing

**100%
OIL FREE
AIR**

Easy Maintenance

- Horizontally Split Gearbox - easy access to bearings, seals & gears.
- Drawer type intercoolers for easy inspection and cleaning.
- Pre-set Preventive maintenance alerts from controller

Web Enabled Access

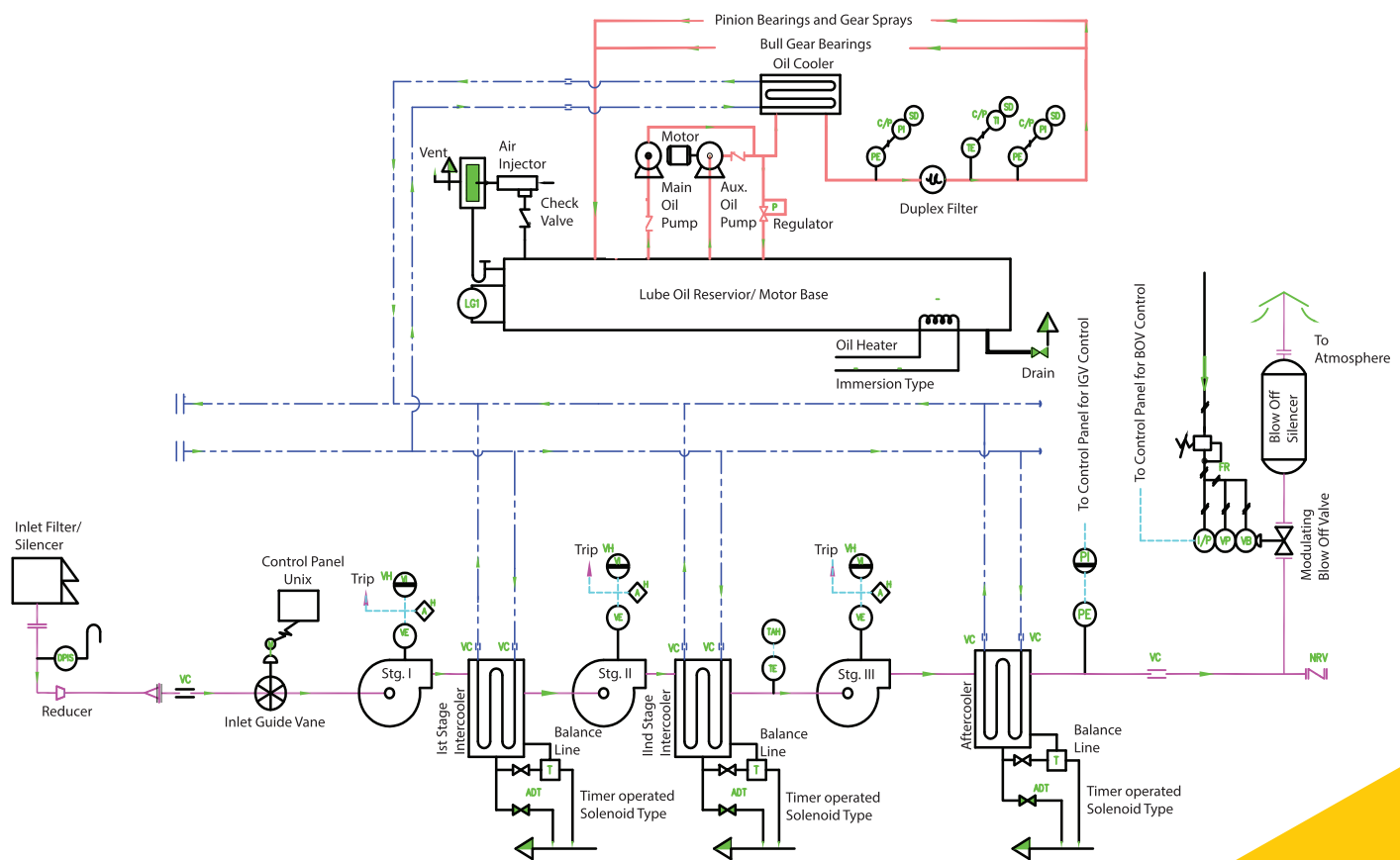
- Remote Monitoring
- Data Trending

KIRLOSKAR CENTRIFUGAL COMPRESSORS

Model	Discharge Pressure #	Capacity		Motor Rating		Weight Without Drive Motor		Dimension L x W x H
		cfm	m ³ /hr	kW	hp	kg	lb	
A - 2100	2.5-10.4	1600-2800	2718-4757	185-500	248-670	4000	8818	4000 x 2300 x 2200
A - 3500	2.5-10.4	2700-5500	4587-9344	280-1000	375-1340	6500	14330	5250 x 2400 x 2400
A - 7000	2.5-10.4	5400-9200	9174-15630	560-1600	750-2145	8900	19621	5500 x 2500 x 2500

with typical Air Suction Filter mounted.

Flow Diagram



KIRLOSKAR CENTRIFUGAL COMPRESSORS

Kirloskar Compressor promises Reliable Design and Operations.

Highly Efficient Impellers with splitter blades.



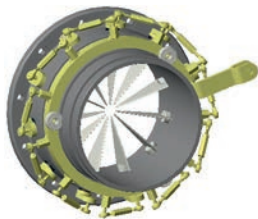
Optimized Volutes

Highly Efficient Aerodynamically designed Diffusers



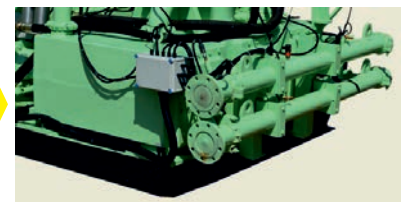
Bearing suitable for all operating load conditions.

Self Contained Lubrication Oil System.
Duplex Filters suitable for inline changeover.



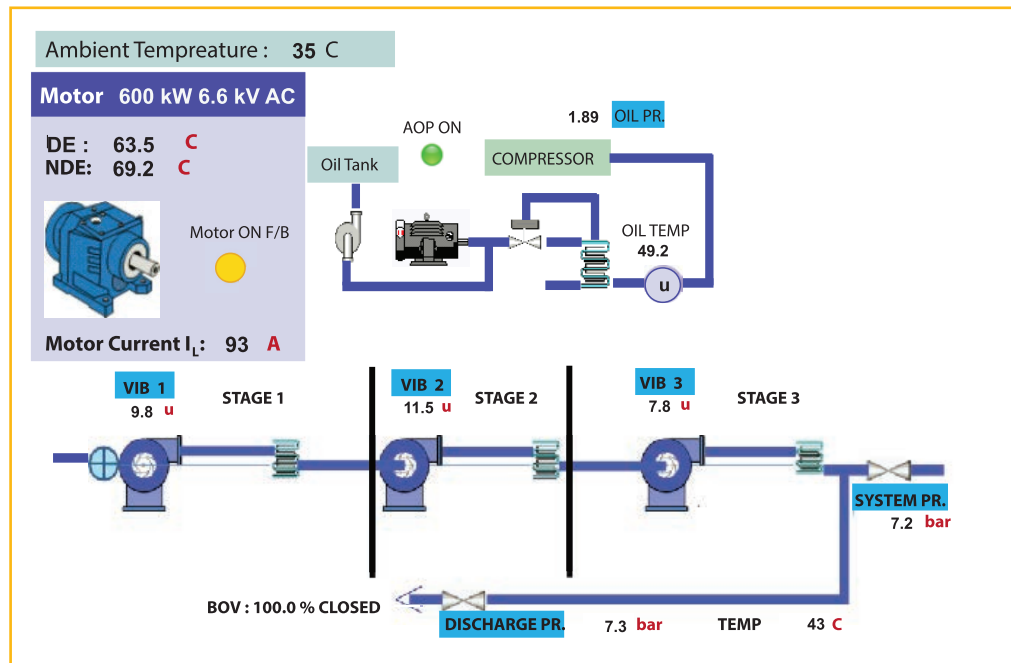
Accurate Capacity & Flow regulation through
Inlet Guide Vanes.

Compact Inter & After Cooler Design.
Interchangeable Tube Bundle Design.



3 Stage Air Filter

KIRLOSKAR COMPRESSORS CONTROL SYSTEM



“Kirloskar Centrifugal Compressors are equipped with an interactive “*Unix*” PLC based touch screen panel which enables the user to have up to date information of the machine running miles away and can control it from anywhere in the world. Intuitive and High Resolution colour display makes critical information quick and easy to access. Web enabled alerts facilitates the user to maintain optimal operation instantly.”



Easy Usability

- Multiple Ports (RS-232, RS-485 & Ethernet) for Connectivity.
- Panel with Touch Screen Display



Web Enabled Access

- Real Time Data Monitoring
- Access via PC or Smart-phone.
- Data Logging on controller memory that can be downloaded on USB Drive.



Optimized System Operation

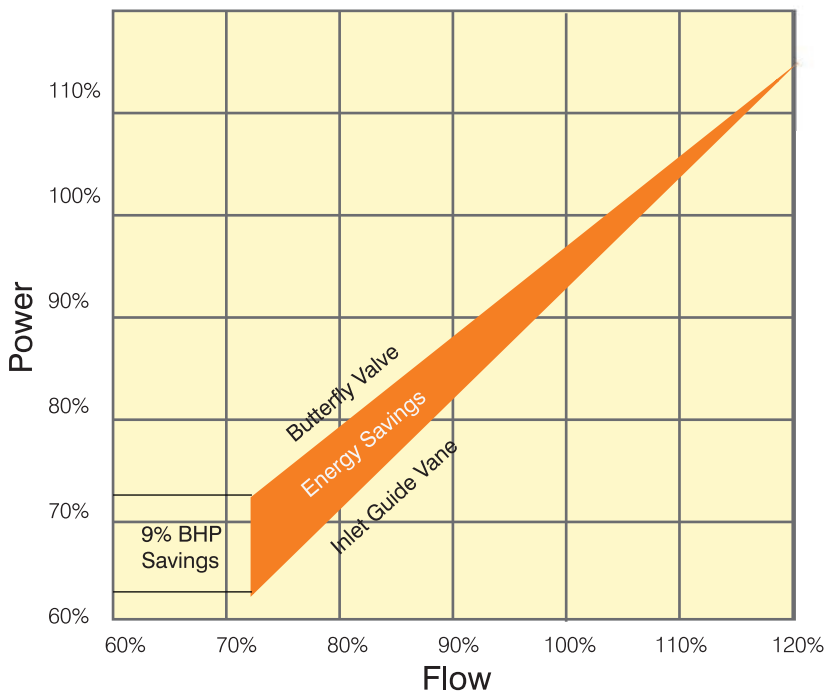
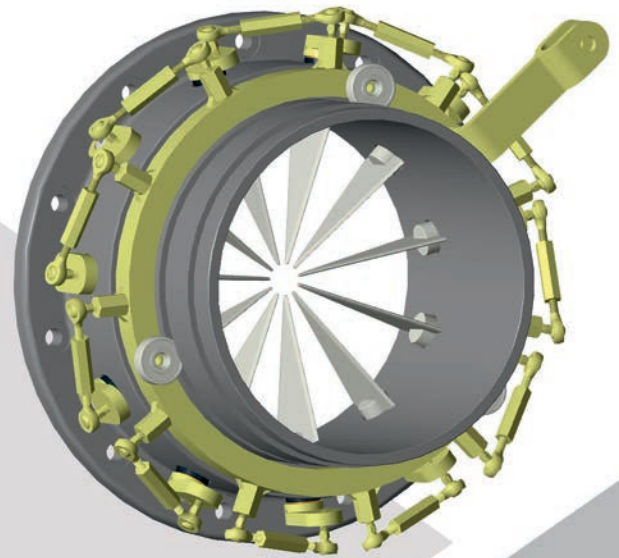
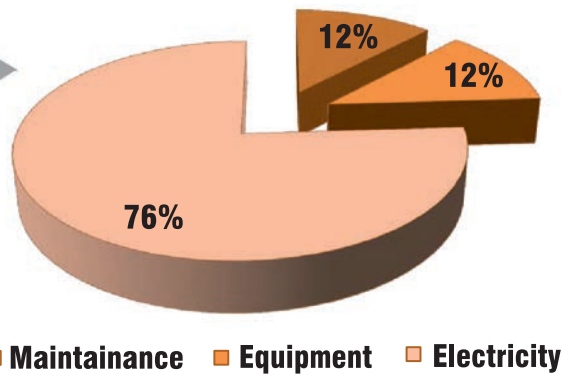
- Compressor Health Monitoring
- Surge Controlling Module
- Daily/ Weekly/ Monthly Shift Scheduling Module

KIRLOSKAR COMPRESSORS HELP YOU SAVE

Saving is Earning

At Kirloskar Pneumatic, we promise you assured savings by targeting lowest Compressors break down rate. Kirloskar Centrifugal Compressors are designed to work 24x7 delivering compressed air at optimum efficiency thereby, reducing operating cost substantially. Moreover lower energy consumption and maintenance cost facilitates increased savings.

Inlet Guide Vanes helps you to save up to 9% Energy over the life of compressor.



Inlet Guide Vanes.

IGVs used in these compressors, play very important role in efficiency of the compressor unit. IGVs are used to improve the overall efficiency of compressors. Its benefit is seen when compressor throttles.

Service and Support

Our Commitment ensures maximum uptime of the compressors and provides solutions to optimise them. Technology upgrades and energy audits are carried out by representatives to suggest the best energy conservation practices. We offer standard and customer specific service packages

Energy Audits

Certified KPCL representatives equipped with flowmeters, data loggers and other related audit instruments, undertake audit of compressed air Plant and possibilities of energy conservation are suggested to customer.

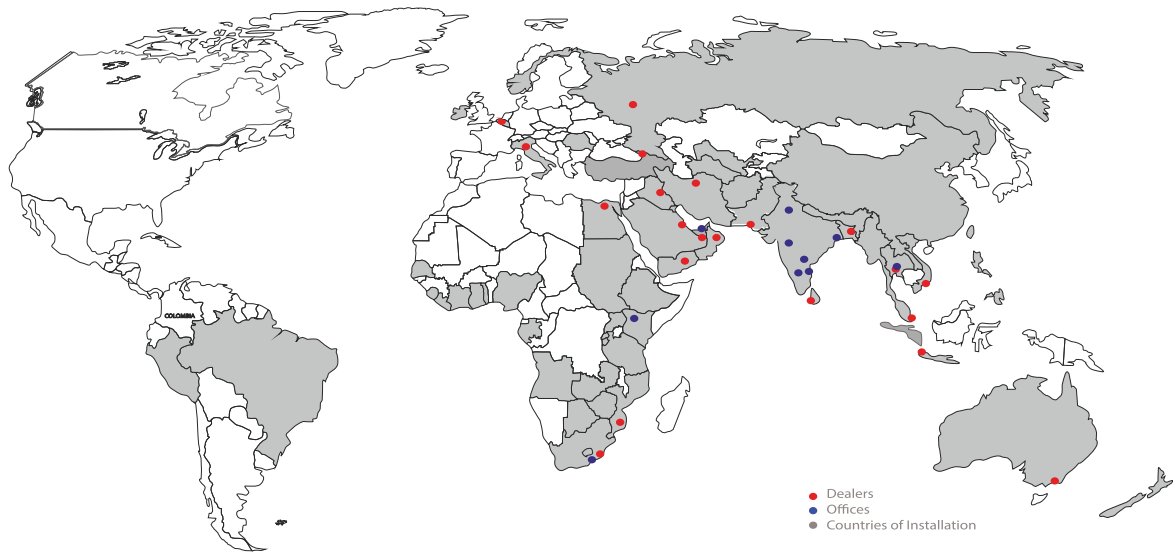
Training Programs

Classroom:

In house training centre caters to requirements of training to customer's user and maintenance staff. These programs give complete information about the principles of operations of the compressors and maintenance practices.

Onsite:

Training staff provides live demonstration in the factory premises and also provides training at customer works if desired by customer.



We Ensure Prompt After Service & Spares Support with over 60+ Dealers.



Enriching Lives

KIRLOSKAR PNEUMATIC CO. LTD.

A Kirloskar Group Company

REGD. OFFICE & WORKS : PUNE : Hadapsar Industrial Estate, PUNE 411 013.

Ph : 020 - 26870133 / 26727000 Fax : 020 - 26870297 / 26870634. Email : acdmktg@kpcl.net



An IMS Certified Company

BRANCH	TELEPHONE	FAX	E-MAIL
MUMBAI : 1002, 10th Floor, Vikas Centre, Dr. C.G. Road, Opp. Bombay Presidency Golf Club, Chembur (East), Mumbai 400 074	022 - 61511234	022 - 25181313	tiwaris@kpcl.net
DELHI : 607, Manjusha Building, 57 Nehru Place, New Delhi 110 019	011 - 26289962, 26421346	011 - 26429685	ccsdel@kpcl.net
BANGALURU : NO 102, 1st Floor, Andree Capitol, 8/1 KH Road, Bangaluru 560 027	080 - 22270029, 22270079	080 - 22270045	ccsblr@kpcl.net
CHENNAI : 1st Floor, Elcanso Complex No. 10, Cosa Major Road, Egmore, Chennai 600 008	044 - 28193066, 28190436, 28192092, 30910143/0144	044 - 28194937	kpclchnacd@kpcl.net
HYDERABAD : 3-5-907, 403-404, Mahavir Lok, Himayatnagar Hyderabad 500 029	040 - 23260743, 23260746,	040 - 23260171	kpclhyderabad@kpcl.net
KOLKATA : 15 GaneshChandra Avenue, 9th Floor, Kolkatta 700 013	033-22119080, 22119081, 22111905	033 - 22365586, 22116948	ccskol@kpcl.net
VADODARA : Chi Chi Tower, A, Killol Children Hospital Lane, Tana Apartment, Ellora Park, Subhanpura, Vadodara 390007	0265 - 2284604, 2284605, 2284606, 3096787	0265 - 2280095	kpclahd@kpcl.net

www.kirloskarkpcl.com

CIN: L29120PN1974PLC110307

